

X

Compact Sheet Laser Cutting Machine

COMPACT DESIGN , BOOST PRODUCTIVITY



Laser Power

3-12kW

Max. Linkage Acceleration

1.5G

Max. Linkage Speed

393.7'/min

PRODUCT OVERVIEW

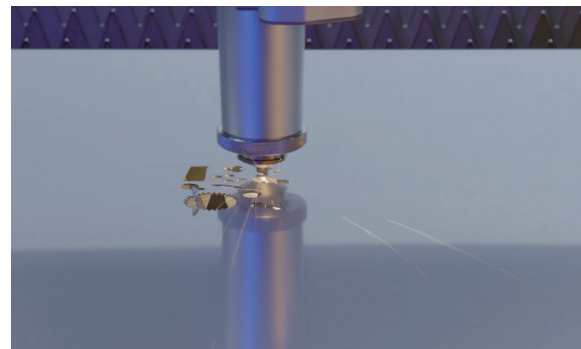
Compact Design, Small Footprint



The design concept of the X series cutting machine is to minimize equipment size while ensuring processing capability, reducing equipment footprint, and saving space for customers.

TYPICAL PROCESSING

High Processing Efficiency,
Strong Processing Capability

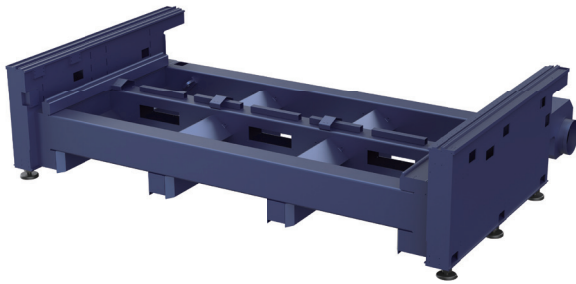
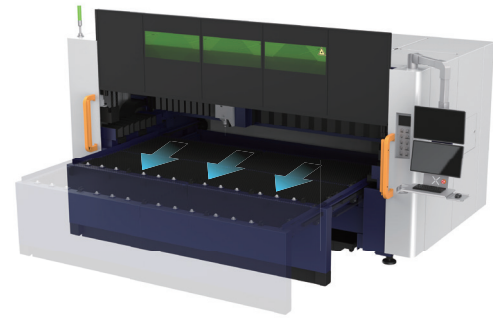


Equipped with a High-dynamic Motion System, the X Series reaches a linkage speed of 393.7 feet per minute and acceleration of 1.5G — achieving true high-speed cutting.

SAVE YOUR SPACE

One-click Switch Between Full and Half Pull-out Worktable

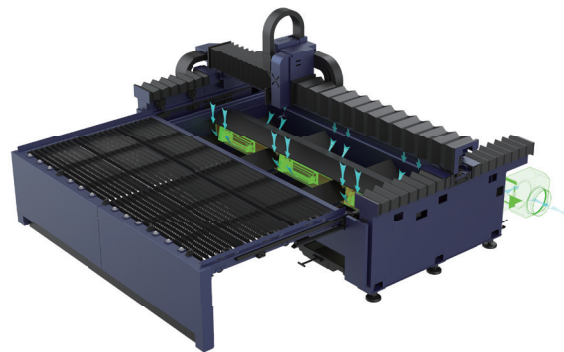
Its bottom support moves together with the worktable or fully retracts. With one click, you can switch between full-pull and half-pull table modes.



RELIABLE & DURABLE

High Stability and Long-lasting Durability

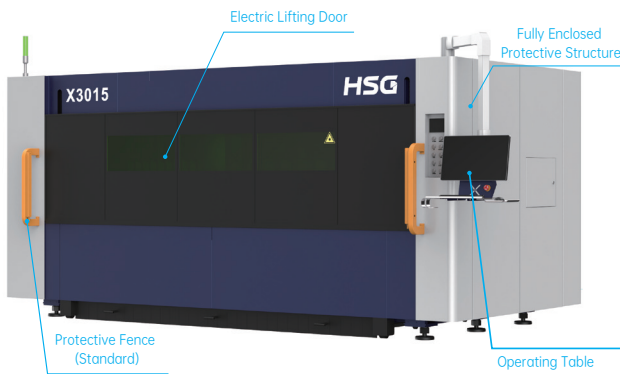
The bed is covered with manganese steel anti-burn sheet, effectively blocking laser heat and avoiding thermal deformation. Its high-strength welded steel frame increases yield strength by 47%, delivering rock-solid stability for precision cutting.



CARE YOUR SAFETY

Dynamic Exhaust Dust Removal System

The Dynamic Exhaust Dust Removal System moves in sync with the cutting path, efficiently removing smoke and dust — making production cleaner and greener.



CARE YOUR SAFETY

All-around Safety Protection

Full enclosed design, the cutting area is fully enclosed to prevent light leakage. When the safety door is opened, the laser cannot emit light. The safety light curtain prevents collisions, protecting both workers and the machine.

TECHNICAL PARAMETERS

Model	X3015
Laser Power	3-12kW
Cutting Area(Length*Width)	10.1'x5' (3-6kw) / 9.94'x5' (12kw)
Maximum Acceleration	1.5G
Max. Linkage Speed	393.7'/min

*Information and images are for reference only. Final specifications and terms are subject to the contract and may change without notice.