



Shearing Machines

HGS(K) HSS(K)

**Yawei 亚威**

股票代码 002559

Continuous improvement First-class quality

Product catalogue

Continuous improvement First-class quality	02
HGS(K)series	04
HSS(K)series	14

HGS(K) series hydraulic guillotine shear and HSS(K) series swing beam shear are new generation of two series of shearing machines self-developed by Yawei based on the design and manufacturing experience for many years, with quality improvement in the shear performance and reliability, make sure you get the best value in your investment

Advancement

- High rigidity technology to realize high precision shearing
- Low temperature technology with remarkable performance
- Complete blade application technology
- Strict safety guard device
- Advanced processing technology and equipment





HGS(K) series hydraulic guillotine shear

Universal shearing machine

- Cutting angle and cutting clearance can be adjusted automatically, easy operation, high precision and efficiency for cutting



HSS(K) series hydraulic swing beam shear

Conventional shear

- Cutting gap can be adjusted manually, easy operation and high efficiency of cutting
- High performance and reasonable price, Yawei guarantee for technology and quality, durable in use



HGS(K) series

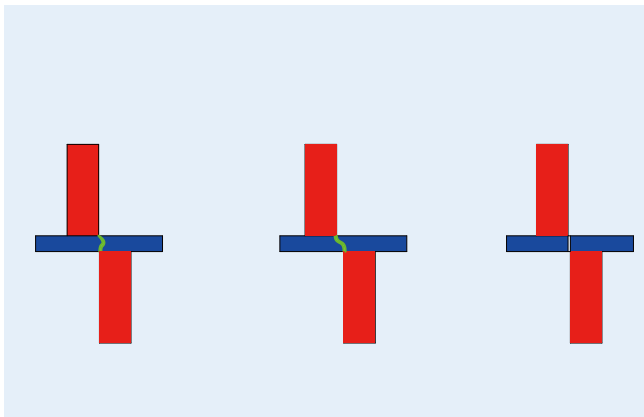
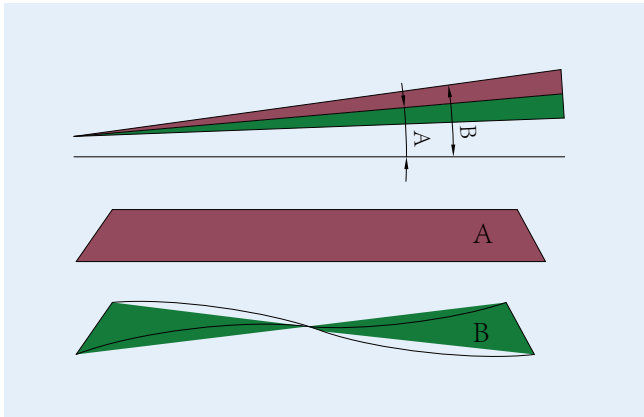
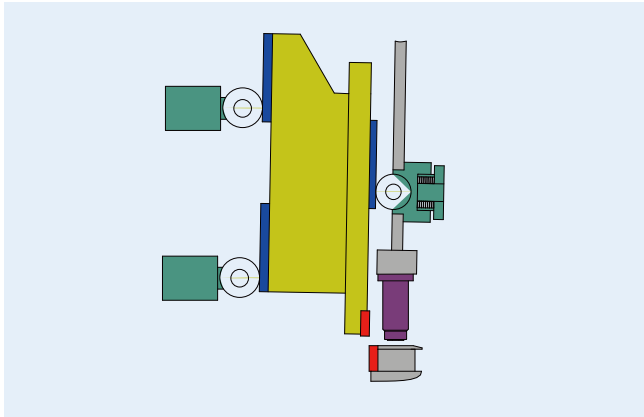
hydraulic guillotine shear



- The latest industrial design, simple and generous appearance
- Three wheel brake type structure, hydraulic driven and smooth action
- Adjustable blade clearance and cutting angle, improve the quality of cutting
- Imported hydraulic configuration from Germany, reduce the hydraulic system breakdown
- Big stroke of backgauge and expand the processing range
- Specified operation system, easy operation
- Many optional spare parts, improve the accuracy, efficiency and security
- With high quality alloy blade as standard configuration, high quality for cutting and long life for blade

HGS(K) series Guillotine Shear

Structure feature



Guide structure

- Adopt three wheel brake type structure, under the force of disc spring, front roller makes the upper beam touch with the two rear rollers all the time, insure the upper beam move up and down stably with go clearance

Adjustable cutting angle

- Increase the cutting angle, force needed to make cutting is small, workpiece is easy to make deformation; Reduce the cutting angle, force needed to make cutting is big, workpiece is flat and cross section is smooth

Adjustable cutting clearance

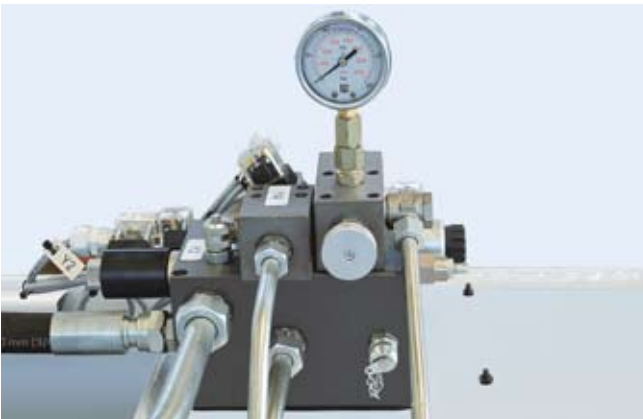
- Appropriate adjustment for blade gap will affect the quality of sheet and life of blade; Reasonable blade clearance should be choosed according to workpiece material to obtine high quality cutting cross section

Standard configuration



Worktable with ball

- Worktable with ball to decrease the friction when feeding and the scratch of sheet plate



Hydraulic system

- Adopt integrated hydraulic system from Roxroth, return by accumulator, low temperature, insure stable and reliable performance



CNC controller

- HGSK CNC machine: Delem DAC360 from Netherland
- HGS conventional machine: ESTUN E21S from Nanjing

HGS(K) series Guillotine Shear

Optional parts



Special length of front beam

- Longer front beam than standard length, can be made according to customer's requirement, convenient to cut bigger sheet plate



Angle protractor positioning device

- Assemble in the left side of front beam, convenient to cut sheet plate with angle
- Move along front beam slot front and rear and position at any place, guarantee the precise cutting angle



Backgauge

- Rear backgauge according to state safety standard, can equip with different standard of photoelectric switch, protect workers who go inside the dangerous rear side of machine

Technical parameter

HGSK Series Hydraulic(CNC) Guillotine Shear Data												
Model	Max. Cutting thickness	Max. Cutting length	Cutting angle	Clamp qty	Strokes (no load)	Backgauge stroke	Power of main motor	Volume of oil tank	Overall dimension			Weight
	mm	mm	°		min ⁻¹	mm	kW	l	L	W	H	
									mm			kg
HGS(K)-6×2500	6	2500	0.5-2	14	18	10-1000	7.5	250	3110	1970	2050	5500
HGS(K)-6×3050	6	3050	0.5-2	17	16	10-1000	7.5	250	3670	1970	2050	6300
HGS(K)-6×4050	6	4050	0.5-2	22	14	10-1000	7.5	250	4670	2070	2180	9000
HGS(K)-6×5000	6	5000	0.5-2	24	12	10-1000	15	650	5720	2400	2500	14500
HGS(K)-6×6100	6	6100	0.5-2	27	10	10-1000	15	650	6860	2500	2630	20300
HGS(K)-8×3050	8	3050	0.5-2	17	13	10-1000	11	320	3680	2020	2100	7400
HGS(K)-8×4050	8	4050	0.5-2	22	11	10-1000	15	320	4680	2080	2200	10800
HGS(K)-8×5000	8	5000	0.5-2	20	13	10-1000	22	650	5760	2420	2550	18000
HGS(K)-8×6100	8	6100	0.5-2	24	11	10-1000	22	650	6870	2500	2650	22500
HGS(K)-8×8100	8	8100	0.5-2	30	10	10-1000	30	1000	8960	2700	2850	44200
HGS(K)-10×4050	10	4050	0.5-2	18	11	10-1000	22	650	4770	2300	2400	13000
HGS(K)-13×2500	13	2500	0.5-2.5	12	11	10-1000	22	650	3240	2280	2600	9000
HGS(K)-13×3050	13	3050	0.5-2.5	14	10	10-1000	22	650	3790	2280	2350	10000
HGS(K)-13×4050	13	4050	0.5-2.5	18	9	10-1000	30	650	4810	2350	2500	15200
HGS(K)-13×5000	13	5000	0.5-2.5	22	8	10-1000	30	650	5860	2400	2600	24000
HGS(K)-13×6100	13	6100	0.5-2.5	26	6	10-1000	30	1000	6960	2500	2900	33000
HGS(K)-13×7100	13	7100	0.5-2.5	31	5	10-1000	37	1100	7960	2600	3150	45000
HGS(K)-13×8100	13	8100	0.5-2.5	36	5	10-1000	37	1100	8960	2700	3450	60000
HGS(K)-16×2500	16	2500	0.5-2.5	12	10	10-1000	22	650	3280	2350	2700	11500
HGS(K)-16×3050	16	3050	0.5-2.5	14	9	10-1000	22	650	3830	2350	2450	12800
HGS(K)-16×4050	16	4050	0.5-2.5	18	8	10-1000	30	650	4830	2380	2520	18000
HGS(K)-16×5000	16	5000	0.5-2.5	26	6	10-1000	37	1000	5880	2500	2900	30500
HGS(K)-16×6100	16	6100	0.5-2.5	31	5	10-1000	37	1000	6980	2550	3000	39000
HGS(K)-16×8100	16	8100	0.5-2.5	36	5	10-1000	45	1100	8980	2700	3500	70500
HGS(K)-20×2500	20	2500	0.5-2.5	13	7	10-1000	30	650	3450	2350	2850	14600
HGS(K)-20×3050	20	3050	0.5-2.5	16	7	10-1000	30	650	4000	2350	2500	16200
HGS(K)-20×4050	20	4050	0.5-2.5	20	7	10-1000	37	800	5200	2500	3000	28000
HGS(K)-20×5000	20	5000	0.5-2.5	24	6	10-1000	55	1100	6000	2700	3350	44000
HGS(K)-20×6100	20	6100	0.5-2.5	27	5	10-1000	55	1100	7100	2800	3450	55000
HGS(K)-25×2500	25	2500	0.5-2.5	13	6	10-1000	45	1000	3500	2400	3100	22000
HGS(K)-25×3050	25	3050	0.5-2.5	16	6	10-1000	45	1000	4150	2450	3200	24000
HGS(K)-25×4050	25	4050	0.5-2.5	20	4	10-1000	55	1500	5050	2500	3000	40000
HGS(K)-30×3050	30	3050	0.5-3.5	16	4	10-1000	55	1100	4250	2650	3020	33300

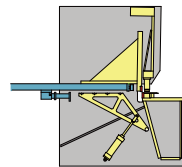
Shears with special specifications can be designed and manufactured

HGS(K) series Guillotine Shear

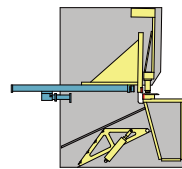
Pneumatic support



Positioning pneumatic sheet support (standard configuration for shear which is smaller than 8×4050)



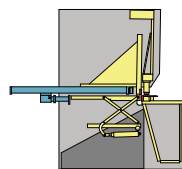
First step: positioning



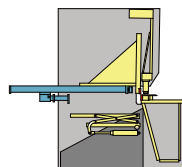
Second step: falling sheet



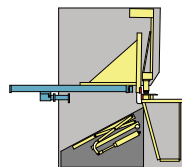
Combined pneumatic sheet support (option)



Step one: positioning



Step two: shearing



Step three: falling sheet

Rear discharging device (option)



- Sheet metal is outputting under the machine, provide safe working environment for operators
- Adopt polyurethane conveyor belt, reduce the surface scratch and noise
- Equip with positioning pneumatic sheet support, convenient for plate positioning, ensure cutting accuracy
- Equip with food wheel, can be easily removed to facilitate the maintenance of the machine
- Equip with small machine (smaller than 8×4050)

HGS(K) series

Guillotine Shear

Front feeding device (option)



Parameter name	Unit	parameter values
Max stroke	mm	2500
Positioning precision	mm	±0.1
Min scrap length	mm	100
Min cutting length	mm	440
Clamp qty	PC	3
Motor power	kW	2

- Driven by double ball screw and linear guide, higher precision for feeding
- Brush worktable with ball steel, reduce the scratch to the material surface
- Pneumatic clamps, parallel with table, convenient for material loading
- Guide wheel in front of the hold-down cylinder, convenient for feeding material automatically, protect the hold-down cylinder
- Left and right side of the table can raise and fall down, convenient for manual cutting



Front feeding device for heavy duty shear machine (option)



Parameter name	Unit	parameter values
Max stroke	mm	3000
Positioning precision	mm	±0.1
Min scrap length	mm	350
Min cutting length	mm	1650
Clamp qty	PC	3
Motor power	kW	2.0×3
Max material turn-over width	mm	500

- Driven by ball screw and linear guide, higher precision for feeding
- Roller type worktable, easy for feeding material
- Hydraulic clamps, more effitive for clamping material
- Guide wheel in front of the hold-down cylinder, convenient for feeding material automatically, protect the holad-down cylinder
- Function of left material turning-over, reduce the waste of material

HSS(K) series

Hydraulic Swing Beam Shear



- The latest industrial design, simple and generous appearance
- Local structured pendulum structure, more stable of function
- Adjustable blade clearance with fast speed and suitable for different thickness of material cutting
- Smaller cutting angle, reduce the twist and deformation, improve cutting quality
- Backgauge can be adjusted slightly, easy operation and function of rasing automatically
- Function of stroke adjustment, improve the processing efficiency
- Light alignment device, easy for cutting with lineation
- Practical and efficient, stable and reliable, cost-effetive and low failure rate

Standard configuration

- Worktable with ball steel
- Backgauge driven by AC motor, moved by T-screw
- Rexroth integrated hydraulic valve block
- E21S system exactly display position of backgauge, can realize simple NC function



ESTUN E21S

Optional configuration

- Positioning pneumatic backgauge
- Longer front beam
- Angle protractor device
- Simple backgauge safety guard
- CNC controller ESTUN E200PS



ESTUN E200PS

Technical parameter

HSS(K) Series Swing Beam Shear												
Model	Max. Cutting thickness	Max. Cutting length	Cutting angle	Clamp qty	Strokes (no load)	Backgauge range	Power of main motor	Volumn of oil tank	Overall dimensions			Weight
	mm	mm	°		min ⁻¹	mm	kW	l	L	W	H	
									mm			kg
HSS(K)-4×2500	4	4	1.2	11	1.2	11	5.5	250	3120	1630	1920	4500
HSS(K)-6×2500	6	6	1.2	11	1.2	11	7.5	320	3120	1630	2060	5500
HSS(K)-6×3200	6	6	1.2	13	1.2	13	7.5	320	3820	1630	1940	6300
HSS(K)-6×4000	6	6	1.2	15	1.2	15	7.5	320	4640	1880	2050	9300
HSS(K)-8×3200	8	8	1.2	16	1.2	16	11	320	3850	1930	2050	8200
HSS(K)-8×4000	8	8	1.2	19	1.2	19	11	320	4670	1930	2060	11500
HSS(K)-12×2500	13	13	1.5	13	1.5	13	18.5	560	3200	2150	2560	9600
HSS(K)-12×3200	13	13	1.5	15	1.5	15	18.5	560	3890	2150	2350	11500
HSS(K)-12×4000	13	13	1.5	18	1.5	18	18.5	700	4690	2200	2430	13000
HSS(K)-16×2500	16	16	2	13	2	13	30	640	3200	2290	2740	11500
HSS(K)-16×3200	16	16	2	15	2	15	30	640	3890	2290	2360	13500
HSS(K)-16×4000	16	16	2	18	2	18	30	820	4690	2290	2450	16300

JIANGSU YAWEI MACHINE TOOL CO., LTD.

XIANCHENG INDUSTRIAL ZONE, HUANGHAI SOUTH ROAD

JIANGDU DIST. 225200 YANGZHOU, JIANGSU, CHINA

TEL: +86(0)514-86880517

FAX: +86(0)514-86880521

HTTP: www.yawei.cc

EMAIL: sales2@yawei.cc

Garant
MACHINERIE

CONTACTEZ-NOUS - CONTACT US :

8860, boul. Guillaume-Couture
Lévis, Québec G6V 9H1

Garantmachinerie.com
info@garantmachinerie.com



CONSEILS PROFESSIONNELS
ÉQUIPEMENTS DE QUALITÉ
SERVICE RAPIDE