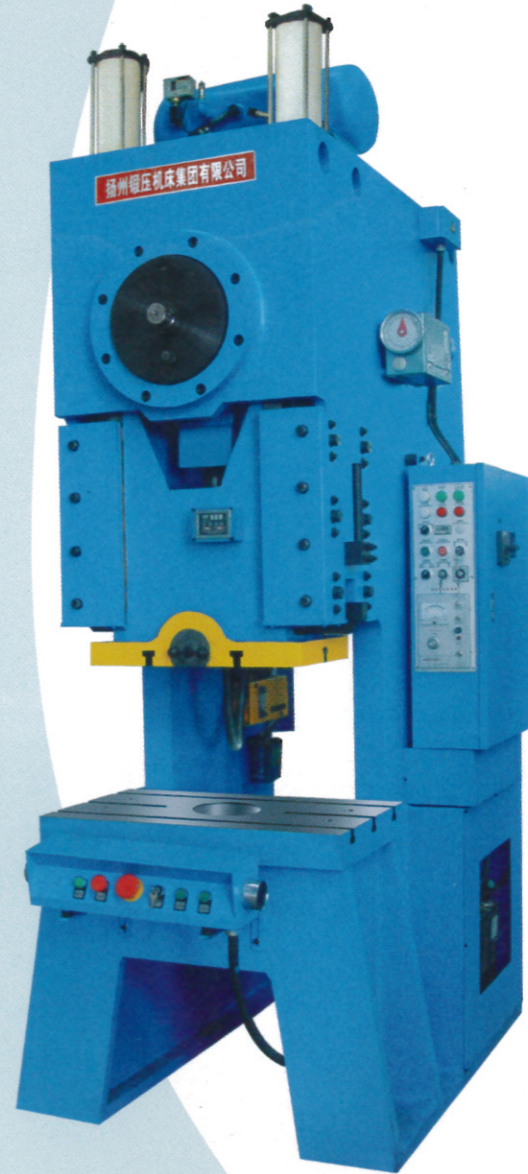


JL21

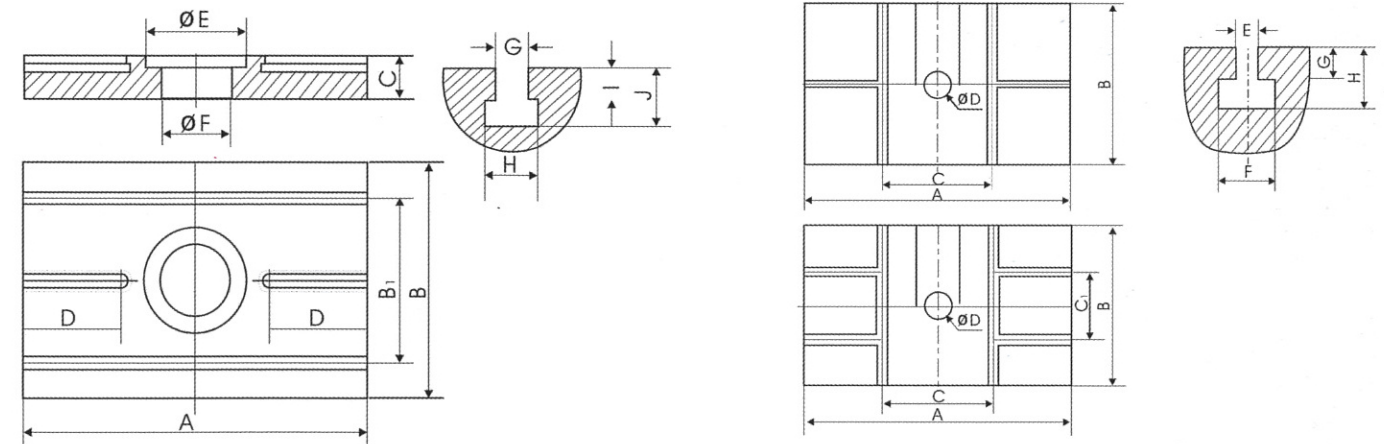


Main structure features:

- Steel-welded frame, high rigidity and less deformation, ensuring the capacity for bearing heavy load.
- Adjustable stroke of slide in 8 gears, to meet the punch processing for various dies.
- Eight-side long rectangle guides of the slide in high moving precision and high accuracy, extending the service life of the die.
- Pneumatic combination friction clutch-brake, low noise and long service life, to ensure reliable safety and flexible action.
- Automatic oil lubrication system, to ensure smooth operation.
- Hydraulic overload protection device achieving high sensitivity in effectively protecting against overload, to ensure convenient and reliable operation.
- Automatic adjustment of the die set height marked by convenient operation(except 25T).
- PLC electrical control system allows various auto-equipment reprogrammed according to different requirements and perform various functions, to ensure high reliability and high adaptability.
- Emergent stop, inching, single and continuous movement.
- Photoelectric protector, feeder, air cushion and other optional accessories are available for the power press subject to the user's demands.

TECHNICAL DATA

Model		JL21-16	JL21-25A	JL21-45A	JL21-63A	JL21-100A	JL21-125	JL21-160A	JL21-200	JL21-250	JL21-315	JL21-400	
Nominal pressure	KN	160	250	450	630	1000	1250	1600	2000	2500	3150	4000	
Nominal pressure Stroke	mm	3	3	4	4	5	5	6	7	8	8	8	
Stroke of slide	mm	8.3-80	10.5-100	11.5-110	12.5-120	15-140	15-140	16.5-160	18.7-180	21-220	220	220	
Strokes per minute	s.p.m	85-140	70-120	60-100	50-80	45-65	42-60	35-55	30-50	30-45	30	30	
Max.shut height	mm	220	250	290	300	360	400	460	480	500	550	550	
Shut heigh adjustment	mm	50	50	70	80	90	90	100	110	120	120	120	
Depth of throat	mm	170	185	235	260	320	320	330	410	410	480	480	
Size of bolster	Length	mm	600	700	800	850	1000	1100	1200	1350	1400	1700	1850
	Width	mm	320	350	450	500	630	630	650	800	800	940	940
hole size in bolster	Diameter	mm	φ 110	φ 110	φ 110	φ 125	φ 125	φ 140	φ 160	φ 180	φ 180	φ 250	φ 250
Thickness of bolster	mm	60	70	80	90	125	150	180	200	200	200	200	
Distance between columns	mm	360	440	510	570	570	600	690	820	820	1050	1050	
Bottom size of side	L to R	mm	400	460	500	600	700	700	760	900	950	1300	1300
	L to B	mm	240	270	300	350	400	400	450	570	620	720	720
Size of the handle hole	Diameter	mm	φ 30	φ 40	φ 50	φ 50	φ 60	φ 60	φ 70	φ 70	φ 70	φ 70	
	Depth	mm	50	60	60	60	80	80	80	100	100	100	
Single speed motor power	Power	Kw	2.2	2.2	5.5	5.5	7.5	11	11	15	22	37	
FVariable motor power	Power	Kw	2.2	3	5.5	7.5	11	15	15	22	30	37	
Over all Dimensions	L	mm	1050	1260	1330	1550	1760	1860	1900	2650	2900	3500	3900
	W	mm	790	980	1000	1145	1320	1400	1410	1500	1600	2250	2250
	H	mm	2100	2300	2650	2870	3080	3150	3544	3950	4150	4250	4310
Total Weight	kg	2500	3000	4200	6200	9200	10500	14300	21000	25000	31000	40000	



参数 Data 型号 Model	工作台板尺寸(mm)Size of table										
	A	B	C	D	E	F	G	H	I	J	B1
JL21-16	600	320	60	200	130	110	14	23	14	23	240
JL21-25A	700	350	70	180	130	110	18	30	15	30	240
JL21-45A	800	450	80	275	140	110	18	30	18	32	280
JL21-63A	850	500	90	245	160	125	22	38	22	39	340
JL21-100A	1000	630	125	300	160	125	24	40	24	42	520
JL21-125	1100	630	150	320	180	140	24	40	24	42	520
JL21-160A	1200	650	180	350	200	160	28	46	28	48	540
JL21-200	1350	800	200	425	240	180	28	46	28	48	600
JL21-250	1400	800	200	450	240	180	28	46	28	48	600
JL21-315	1700	940	200	425	240	180	36	60	35	60	640
JL21-400	1850	940	200	525	280	220	36	60	35	60	680

参数 Data 型号 Model	滑块底面尺寸(mm)The bottom size of silde										
	A	B	C	D	E	F	G	H	C1		
JL21-16	400	240	200	30	14	23	14	23			
JL21-25A	460	270	200	40	18	30	18	30			
JL21-45A	500	300	250	50	18	30	18	30			
JL21-63A	600	350	250	50	22	38	20	37			
JL21-100A	700	400	360	60	22	38	22	39			
JL21-125	700	400	360	60	22	38	22	39			
JL21-160A	760	450	360	70	28	46	20	48			
JL21-200	900	570	400	70	28	46	30	50	300		
JL21-250	950	620	400	70	28	46	30	50	300		
JL21-315	1300	720	400	75	36	60	30	55	300		
JL21-400	1300	720	400	75	36	60	30	55	360		